

**Customer Profile**

Washington Group International, Inc., USA provides the talent, innovation, and proven performance to deliver integrated engineering, construction, and management solutions for businesses and governments worldwide.

**Contact Details**

Contact Name/Tel./ Email will be available on request.

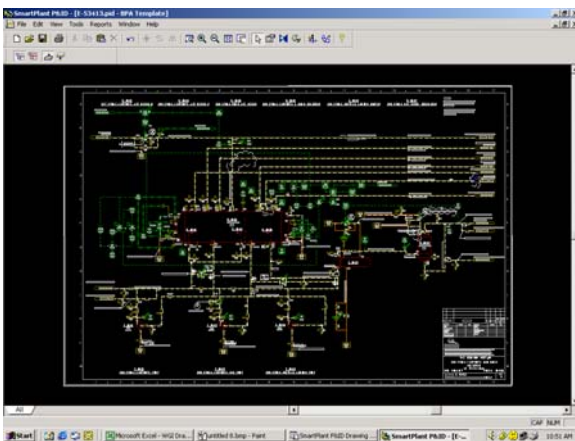
**Project Statement**

The customer has 92 numbers of legacy piping and instrumentation diagram (P&IDs) in AutoCAD-14 format. The customer required updated and intelligent P&IDs in SmartPlant P&ID. Also, there was requirement of splitting few complex P&IDs in to number of less complex P&ID.

**Rolta Solution**

Rolta has provided the following solution architecture to cater to WGI’s requirement.

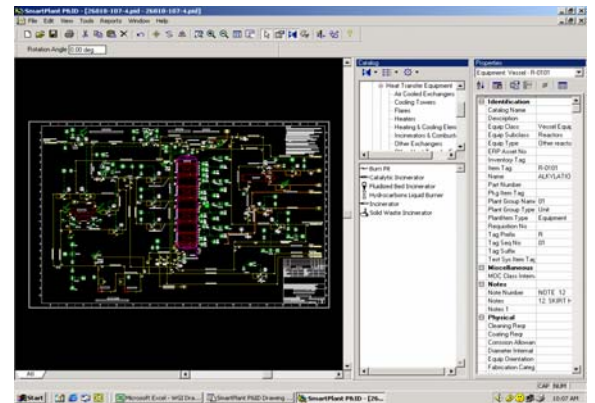
1. Conversion of AutoCAD P&IDs to Intergraph’s SmartPlant P&ID version 3.0
2. Splitting Complex P&IDs to relatively simple P&ID drawings using SP P&ID.



**Solution Architecture**

The solution has been divided into the following phases:

1. Study of input AutoCAD P&ID drawings
2. Conversion of AutoCAD P&IDs in to intelligent SP P&ID
3. Symbols and Data dictionary customization as per customer requirement
4. Splitting complex P&IDs in to multiple simple P&IDs in SP P&ID.



**The Project**

Scope of the project consists of: Converting 92 dumb AutoCAD –14 P&IDs by redrawing in to 100 intelligent Smart Plant P&ID format using Smart Plant version 3.0.

The Symbols delivered with standard Reference data were used and few additional Reference symbols approved by WGI were customized.

Splitting of single P&ID into two P&ID and rearranging the drawings to avoid the unnecessary crossings of process lines and bends.

Basic Inputs for the conversion were in the form of AutoCAD -14 P&IDs, which belonged to two Plants of WGI viz; BPA & Cumene  
Total number of Output SP P&IDs-100,

**Deliverables**

1. 100 intelligent SmartPlant P&IDs.
2. PDFs of SmartPlant P&IDs.
3. Customized Symbols and Labels as per WGI requirement.
4. Item tag dll modified as per WGI requirement.
5. Exception Reports for all drawings.
6. Total Site and Plant backup of SPPID v 3.0 project.

**Benefits to the Customer**

The Customer reaps substantial benefits by creating or converting non-intelligent AutoCAD P&IDs to Intelligent SmartPlant P&IDs.