



Release Notes

Copyright notice

Copyright © 2012 by Rolta India Limited, Rolta Canada Limited, and Rolta International, Inc. All rights reserved.

Important notice

Handle this document carefully as it contains material protected by international copyright law. Any reproduction, full or in part, of this material is prohibited, without the express written permission of the company. Any reproduction with permission shall contain the above-mentioned copyright notice.

Product changes

Rolta India Limited reserves the rights to change, update, or make obsolete the name of the manual at any time and without notice.

Rolta India Limited warranty

Rolta India Limited hereby represents and warrants to Licensee that Rolta India Limited is the owner of the Software or otherwise has the right to grant to Licensee the rights to use this software.

Trademarks

Microsoft and Windows are registered trademarks of Microsoft Corporation worldwide. Other brands and their products are trademarks or registered trademarks of their respective companies and should be noted as such.

Sales and account management

If you need to contact sales and account management, send an e-mail message to onpoint.sales@rolta.com.

Product management

For current release information or a listing of ongoing product management activities, send an e-mail message to onpoint.pm@rolta.com.

Technical support

If you need to contact customer support, send an e-mail message to onpoint.support@rolta.com.

7.5.0.139

In this release

These release notes include last-minute developments and a list of known and resolved issues. For software and hardware requirements and general installation and upgrade instructions for OnPoint 7.5, see the *OnPoint 7.5 Installation Guide*, which you can access in the installation area designated by OnPoint Support Services.

For additional tips and information, see the OnPoint Help that can be viewed at the bottom of the OnPoint Administration Console or by pressing F1.

For a list of new features, see the What's New topics in the online help for the OnPoint Administration Console.

Related topics

- “OnPoint 7.5 known issues” on page 4
- “OnPoint 7.5 known limitations” on page 5
- “OnPoint 7.5 documentation errata” on page 5
- “OnPoint 7.5 resolved issues” on page 8
- “Troubleshooting” on page 10

OnPoint 7.5 known issues

Ref No.	Description
ONP00029903	COGO Tool does not work with a WFS connection
ONP00020011	Location search results are displayed on the first map tab that is found to support acetates (map markup layer).
ONP00028374	Culture change in Classic theme changes the theme to Sapphire.
ONP00028973	Map Snapshot functionality does not work with Security Switch settings enabled (HTTPS enabled for the OnPoint login page) and base map.
ONP00028996	The Print template does not retain the configured output image formats and text fields in the OnPoint Administration Console.
ONP00029265	Website displays blank page if users log in with a user ID containing an apostrophe, for example Rolta's.
ONP00029708	Google Chrome - When users try to select the Zoom in or Zoom out map tools, the pointer tool does not respond.
ONP00029901	An inherent default timeout in ASP.net web services of 100 seconds cannot be set by configuration, only by code reference. In OnPoint 7.5, various print geoprocessing service activities may cause the Cartographic Print Web Service to pass the timeout before getting a valid print request ID.
ONP00029716	Domain/subtypes are not refreshed after synchronization using 10.1 map services.
ONP00029739	Routing—Captions administrators enter for routing (to localize the functionality in languages other than the default US English) disappear from the Administration Console the next time administrators open it.
ONP00029746	If users perform a selection while OnPoint is set to display in Arabic, and then click one of the Info links on the Results window, and then drag the More Information window, the window disappears.

Ref No.	Description
ONP00029752	Buffer rings with other than solid and hollow fill do not display in CartoPrint, where the map provider is ArcGIS Server 10 or earlier, and the connection type used to connect to ArcGIS Server from OnPoint is ArcGIS Server, which is also known as the direct connection (as opposed to the ArcGIS Server SOAP API connection).
ONP00029860	Cartographic Map Series (SOAP) print template (where the map provider is ArcGIS Server 10.1) cannot be used if the name of the template is changed from its default.
ONP00029863	The resources for the print template names (Cartographic print) display empty under the Security/Resources node, in the OnPoint Administration Console.
ONP00029444	In the Classic theme, no tooltips display for the map toolbar tools.

OnPoint 7.5 known limitations

Ref No.	Description
ONP00028478	Legend not updating as per the colors in new theme in thematic mapping

OnPoint 7.5 documentation errata

Errata listed here will be corrected in a subsequent release.

Omissions

Guide	Description
Application Design Guide (online help for the Administration Console)	Renaming themes in Application Settings > Theme Settings <ul style="list-style-type: none">Names for themes cannot be longer than 25 characters. Theme names must be at minimum one character long.In Allowed Themes, by default three options are available: Sapphire is selected, and Inswing and Classic are not selected.
PDF versions of the Application Design Guide (online help for the Administration Console)	Figure entitled “Base map that is selected in Select data-source items to display is shown by default” is incorrect.
Web User Guide—InSwing	Multiple base maps
Application Design Guide (online help for the Administration Console)	Ability to display Shape Links in OnPoint dialog box.
Application Design Guide (online help for the Administration Console)	Ability to pass User ID and current coordinates to a custom tool or command

Out of date

Guide	Description
Web User Guide—InSwing	Zoom in and Zoom out bar—screen capture
Web User Guide—InSwing	Changing the language—screen capture
Web User Guide—InSwing	Figure 36—displays the Results window as it appears in the Sapphire theme.
Web User Guide—InSwing	Figure42—displays the Results window as it appears in the Sapphire theme
Web User Guide—InSwing	Measure tool—screen capture

Guide	Description
Web User Guide—InSwing	Figure 51
Web User Guide—InSwing	Figure 52

Corrections

Guide	Description
Application Design Guide (online help for the Administration Console)	<p>Description for Order Column on column types that can be used in searches should read:</p> <p>The search values listed in the search column on the search page are listed based on the order of the values of selected 'Order column'. Order column does not control the order in which values are displayed in the Results window.</p>
Web User Guide—InSwing	Figure 52—Only URL metadata is supported in the InSwing theme. The screen capture leads to believe otherwise.
Application Design Guide (online help for the Administration Console)	<p>OnPoint Admin Console Online Help less up to date than PDF</p> <p>See OnPoint_7.5_ApplicationDesignGuide.pdf in the location where you downloaded OnPoint 7.5.</p> <p>The following topics are more up to date in the PDF version:</p> <ul style="list-style-type: none"> Configuring CartoPrint—single-map printing with ArcGIS 10.1 Configuring CartoPrint—map-series printing with ArcGIS Server 10.1 Managing user accounts

Guide	Description
Application Design Guide (online help for the Administration Console)	<p>Step 5 for creating a CartoPrint map series entitled “Setting map series chunk size” is incomplete in the OnPoint Admin Console help.</p> <p>See OnPoint_7.5_ApplicationDesignGuide.pdf in the location where you downloaded OnPoint 7.5 for the complete procedure.</p>
Application Design Guide (online help for the Administration Console)	<p>Procedure entitled “Tool Modifications to the Sapphire theme” no longer applies but appears in the OnPoint Admin Console online help. It has been removed from the PDF version.</p> <p>See OnPoint_7.5_ApplicationDesignGuide.pdf in the location where you downloaded OnPoint 7.5.</p>

OnPoint 7.5 resolved issues

Ref No.	Description
ONP00027616	An unhandled Exception occurs when Users and Roles has exceeded more than 150 characters in the description.
ONP00019319	URLs in Simple Report PDF are incorrect.
ONP00019512	No internet access with Bing or Google base map enabled.
ONP00019595	Coordinate system not automatically recognized for certain projected coordinate systems
ONP00019880	OnPoint 7.0 EP SOAP connection to AGS Server 10.1 with ArcGIS security turned on fails
ONP00019884	<p>In searches where specifying criteria in at least one field is mandatory, and Allow Search All was enabled, users were able to select a default value causing them to think</p> <p>“Criteria mandatory in at least one field.” message has been replaced with “You must specify more criteria for this search.”</p>

Ref No.	Description
ONP00028924	Role name is not displayed completely in the "Filter By Role" combo box in MMC when the role name is lengthier than combo box width
ONP00019887	Warning message should be displayed before viewing a report when all the records are unchecked in the results grid
ONP00019896	Feature Access editing does not work with ArcGIS Server 10.1
ONP00025317	Setting initial extents on a AGS cached base map results in inconsistent behavior
ONP00025345	Map printed through Cartographic template will not have the buffer rings for the below scenarios
ONP00019885	Reset button on search windows doesn't reset all items

Troubleshooting

Layer attribute searches fail if they contain search columns whose data type is date, map provider is ArcGIS Server, and data source is GDB, MDB or DBF

Layer attribute searches containing search columns whose data type is Date can fail where the map provider is ArcGIS Server and the data source is any of these:

- Personal geodatabase
- File geodatabase
- Shape files

Workaround

1. In the OnPoint Administration Console, select the Searches node.
2. Double-click the search.
3. In the Edit Layer Attribute Search window, select the **Ignore SQL Validation** option.

Printing map series (Cartographic Print Map Series SOAP print template) with the Current extents or Entire index layer options results in timeout

The timeout parameters below should be in synch to avoid timeout exceptions and to get better performance in map series generation.

- “httpRuntime executionTimeout—Cartographic Print Web Service” on page 10
- “OnPointMapSeriesPrintingTasks service timeouts—ArcGIS Server” on page 11
- “SOAP API connection parameters and performance considerations for CartoPrint and ArcGIS Server 10.1” on page 13

httpRuntime executionTimeout—Cartographic Print Web Service

Default value = 600 seconds

Increase or modify this parameter to synch-up with the OnPointMapSeriesPrintingTasks geoprocessing printing service timeouts in ArcGIS server.

This timeout occurs if some information is requested (by the CartoPrint tools on ArcMAP or OnPoint) from the server, but ArcGIS Server takes too long to respond. Information requested could be such things as what geoprocessing services are available, determining what features should be included in a print request chunk, or a print request itself. Crossing this timeout will sometimes cancel the print request.

1. On the computer running the Cartographic Print Web Service, locate the web.config for this web service, and open it in an XML editor.

```
<Installed Directory>\OnPoint7.5\CartographicPrintWebService\  
web.config
```

2. Locate the executionTimeout parameter and set it to value that is sufficient for print series generation and that is in line with the OnPointMapSeriesPrintingTasks geoprocessing printing service timeouts in ArcGIS server. See the other timeout parameters below.

```
<httpRuntime executionTimeout="600"/>
```

OnPointMapSeriesPrintingTasks service timeouts—ArcGIS Server

1. Open ArcCatalog, and in the Catalog Tree pane to the left, expand the GIS Servers node.
2. Expand the node for a GIS Server where you have published the OnPointMapSeriesPrintingTasks geoprocessing printing service.

3. Select the OnPointMapSeriesPrintingTasks, right-click and select Service Properties.

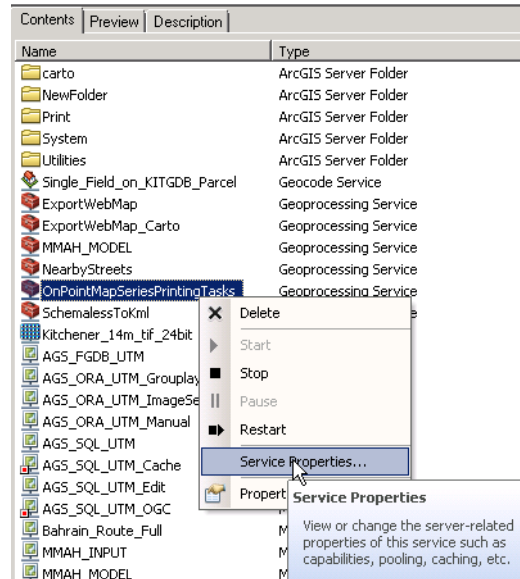


Figure 1

Accessing service properties for the OnPointMapSeriesPrintingTasks geoprocessing printing service

4. On the Service Editor, on the left, select the Pooling option. Ensure the Timeouts section has values for its parameters in sync with the other timeouts discussed in this section.

Descriptions of the parameters in the Timeouts section are available in the ArcGIS 10.1 online help.


Editing: OnPointMapSeriesPrintingTasks [Help](#) [Save and Restart](#) [Cancel](#)

General	Specify Number of Instances
Parameters	Minimum number of instances per machine: <input type="text" value="1"/>
Capabilities	Maximum number of instances per machine: <input type="text" value="2"/>
Pooling	Specify Service Timeouts
Processes	The maximum time a client can use a service: <input type="text" value="6000"/> seconds
Item Description	The maximum time a client will wait to get a service: <input type="text" value="60"/> seconds
	The maximum time an idle instance can be kept running: <input type="text" value="1800"/> seconds

Figure 2
Geoprocessing service timeout parameters

SOAP API connection parameters and performance considerations for CartoPrint and ArcGIS Server 10.1

When you set up a SOAP API connection to ArcGIS Server 10.1 for the purpose of establishing communication between OnPoint and geoprocessing printing tasks required for CartoPrint, you must take into account the extra parameters described in Table 1 on page 14.

1. In ArcMap, open the map document you use as a CartoPrint layout for the map series.
2. Click the Map Series Manager icon  on the toolbar.
 - You must have installed OnPoint AO tools on the computer where ArcMap is installed, and in ArcMap, in Customize > Toolbars, select the OnPoint Cartographic Map Series Print 7.5 toolbar.
3. On the Map Series Manager, after connection to a Cartographic Print web service, and selecting a map series, click the Edit button in SOAP Connection. See the timeout parameters described below in Table 1 on page 14.

Parameter	Description
Status Check Start Delay	<p>Default value = 3 seconds</p> <p>This is the number of seconds after a map has been requested that OnPoint starts to poll ArcGIS Server for status checks.</p>
Status Check Interval	<p>OnPoint polls ArcGIS Server on the status of pending map requests every second by default.</p> <ul style="list-style-type: none"> • If the map requested is complex or if a map series is requested (which contains data-driven pages), it will take longer for ArcGIS Server to process. If the interval is not long enough, a response from ArcGIS Server may be missed and a map request failure will be reported. • In case of repeated map request failures, try increasing Status Check Interval or Status Check Max. Count or both.
Status Check Max. Count	<p>Default value = 20</p> <p>OnPoint polls ArcGIS Server for map request status for the maximum number of times you define here.</p> <ul style="list-style-type: none"> • If the map requested is complex or if a map series is requested (which contains data-driven pages), it will take longer for ArcGIS Server to process. If the maximum number of polling attempts defined here is not high enough, a response from ArcGIS Server may be missed, and a map request failure will be reported. • In case of repeated map request failures, try increasing Status Check Interval or Status Check Max. Count or both.

Table 1

Additional parameters required for connections to ArcGIS Server 10.1 for CartoPrint

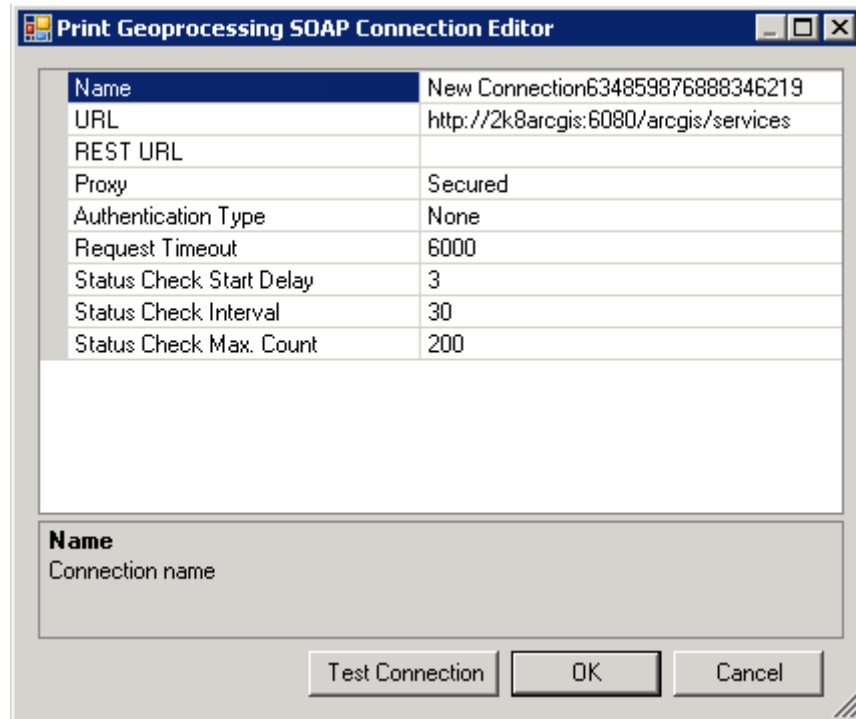


Figure 3
ArcGIS Server (SOAP API) connection for geoprocessing print services for CartoPrint

