



## **Rolta OnPoint™ 8.0**

**Integrating Geospatial  
and Non-spatial Data.  
More Power.  
More Flexibility.**



## Rolta OnPoint™ Version 8.0

Rolta OnPoint enables the rapid publishing of location-based services that are secure and cross-platform compatible. And now with the latest release, OnPoint puts more power and flexibility in users' hands and delivers increased functionality to dramatically improve the support of business processes across a diverse range of functions.

OnPoint supports Esri technologies and ArcGIS Online, making use of the solutions' maps, feature and geocoding services. Additionally, you can publish ArcGIS Online layers and base maps to desktops or your OnPoint Connected Mobile users.

Rolta is a recognized leader in GeoSpatial solutions, serving hundreds of organizations around the world. The OnPoint product line, part of Rolta's integrated solutions for the Public Works, Oil & Gas and Utilities sectors, offers a simple way to deliver improved efficiencies and provide key business intelligence metrics to your organization. And with these new features in OnPoint 8.0, you'll find increased power for enhanced productivity.

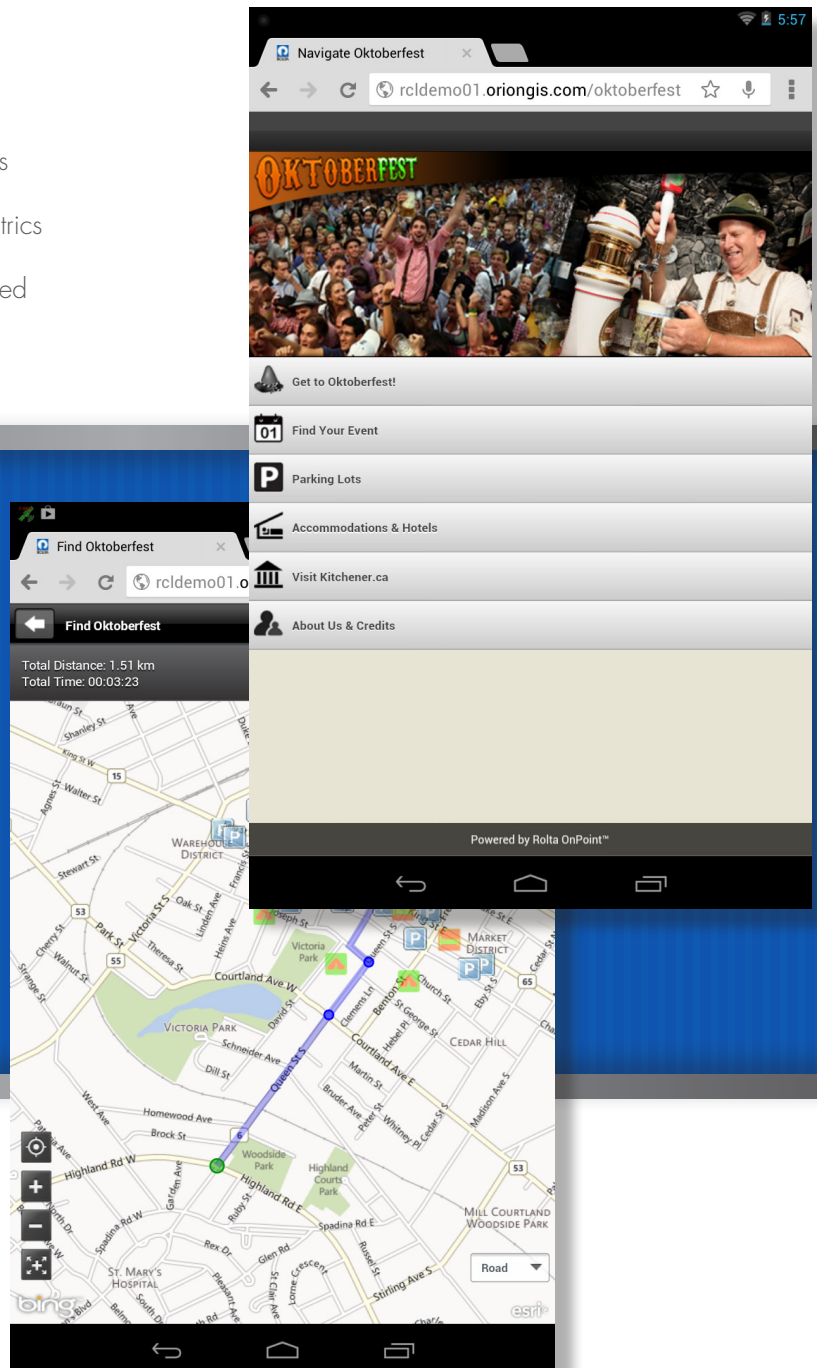
## OnPoint Mobile – Connected

With the increasing use of mobile devices to consume information, the OnPoint Mobile product extension opens new pathways for delivery of real-time data. Now you can provide access to your OnPoint website through tablets or smart phones.

OnPoint Mobile allows organizations to quickly publish location-enabled services (searches, mapping, tracking, routing, reporting, data collection) on mobile devices. Mobile application services can be easily configured using the OnPoint administration console without the need for any programming.

### New Features in OnPoint 8.0 include:

- OnPoint Mobile – Connected and Disconnected
- Personalization
- Query Builder
- Layer Filter
- Keyword Search
- Database Searches and Results
- Thematic Mapping
- Linear Referencing
- Statistical Tool
- Embeddable Map
- Web Print



### Key features of OnPoint Mobile – Connected include:

- Routing and navigation
- Spatial and attribute editing
- Customizable searching and reporting
- Real-time data updates allows users to see changes as they occur without the need to re-sync

Leveraging the sophisticated OnPoint configuration, OnPoint Mobile incorporates rich security protocols. The HTML5 browser supports Windows, Android, iOS and Blackberry, and by utilizing mobile devices' GPS, organizations have a cost-effective alternative to expensive systems like Automated Vehicle Locators (AVL).

### OnPoint Mobile – Disconnected

If you've invested in deploying ruggedized devices to field workers or allowing BYOD, don't fail to maximize their productivity due to a lack of integrated software. Organizations that deploy workers into the field need to enable them to provide updates even when they don't have Internet access, which is often the case with remote

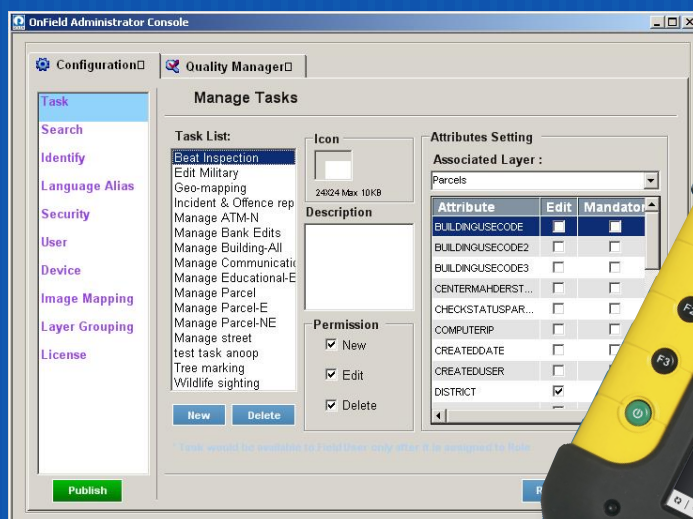
workers. Rolta's OnPoint Mobile – Disconnected product extension gives field workers the ability to capture important data, save the information or edits locally and sync them once connected to the server.

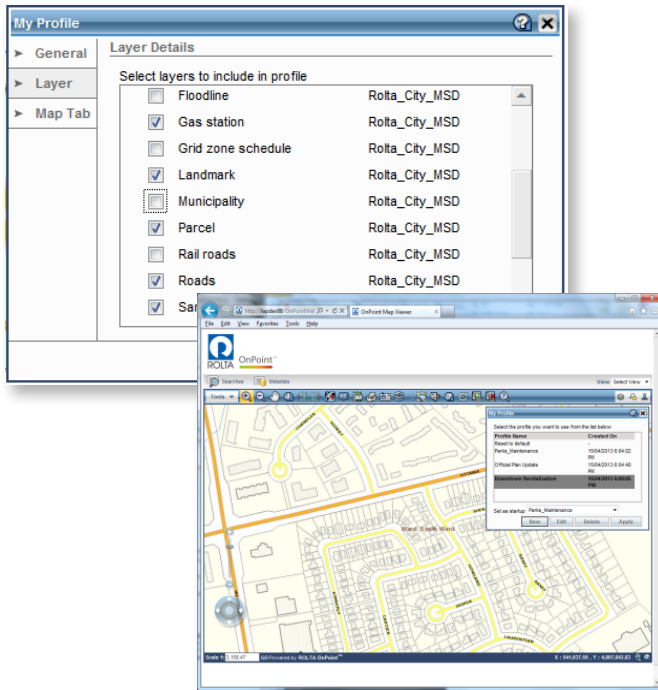
Advanced editing capabilities that integrate with formal editing workflows allow users to accomplish greater detail when cutting and editing geometric shapes with a more GIS-like interface. Editing capabilities support versioned GIS databases and include tools for QC/validation of data edits.

### Additional features of OnPoint Mobile – Disconnected include:

- Role-based tasks and views
- Secure login and authentication allowing administrators to provide user access to specific GIS layers and data
- Integration with cameras and external GPS devices

OnPoint Mobile – Disconnected leverages your Esri investment, handling large amounts of data covering multiple layers and improving the flow of information within the organization and from external sources.





## Personalization

We live in an online world that enables us to customize our Google page, our YouTube page and our Facebook page. Why not give users the ability to tailor the content and appearance of their OnPoint homepage? Version 8.0 lets you do just that.

Because users often have different needs and different information requirements, the ability to personalize the OnPoint website improves productivity by putting information of greatest interest right up front. Users can add custom layers, save search criteria and create map bookmarks.

Personalization achieves better and easier user interaction with the site. Additionally, site administrators have better control over the exposed map content, driving a simpler presentation of available content.

## Query Builder

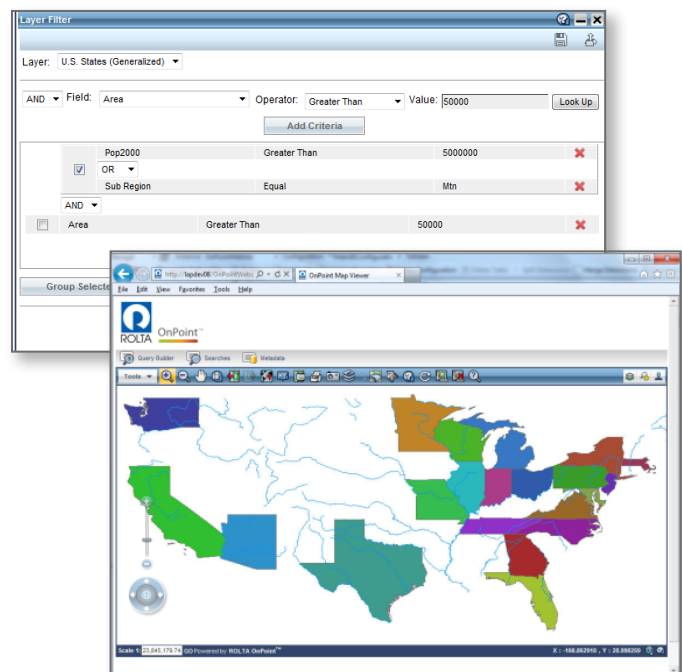
Version 8.0 of OnPoint not only lets users customize the site to meet their requirements or preferences, but also lets employees create custom queries and save them as part of their Personalization settings.

Query Builder functionality allows end users to build complex SQL queries via an intuitive, wizard-like interface. Or, advanced users can employ a text-based approach. No longer are users limited to configurations set by the administrator. With the freedom to create custom and complex searches, the improved access to data benefits individuals and the organization at large.

## Layer Filter

In accordance with the new version of OnPoint's focus on user preferences and enhanced capabilities, 8.0 delivers end-users greater cartographic control. Now individuals can filter spatial data using SQL.

Filtering at Its Finest. The map below indicates filtering of U.S. states by population, region and area.

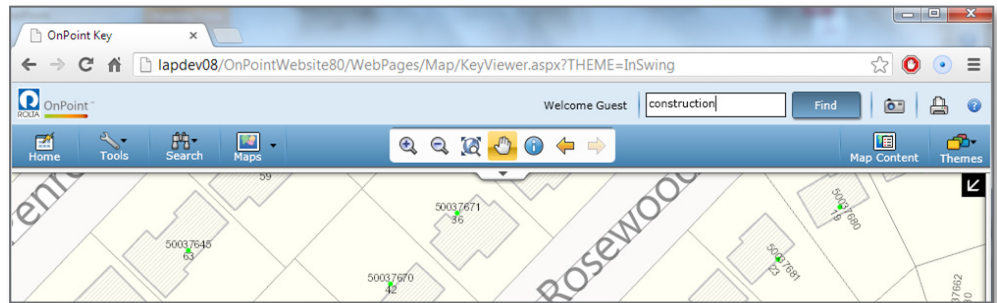




## Keyword Search

The more you use OnPoint, the greater the data available. The greater the data available, the more difficult it can be to find exactly what you're looking for. The latest version solves that problem.

Keyword Search functionality locates information across multiple datasets and tables. The clean, simple user interface makes it quick and easy to locate the desired information without needing any knowledge of the database structure in which the material is located.



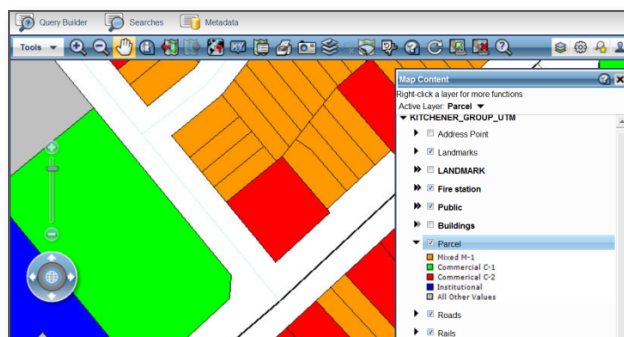
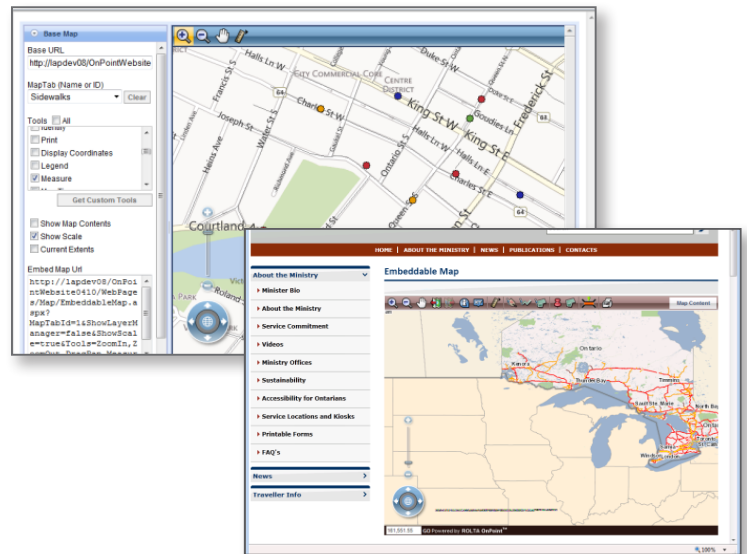
## Database Searches and Results

Now with OnPoint 8.0 you can search and analyze non-spatial data right alongside map-view and spatial data. The ability to expose non-spatial data from other business systems provides a strong improvement in the ability to integrate spatial and business data for better analysis and decision making.

## Enhanced Thematic Mapping

It's mapping your way. OnPoint 8.0 improves your ability to create a thematic map that displays the spatial pattern of a social or physical phenomenon, such as population density, life expectancy or climate change.

Now users can generate custom themes for selected spatial features based on joined business data. Powered by the ability to perform spatial analysis using non-spatial data integrated through OnPoint, this new capability brings truly enhanced functionality to your end-users.



## Enhanced Embeddable Map

Utilize the tremendous OnPoint functionality within third-party tools to expand the value of your data. The functionality available in embedded maps has been greatly expanded, allowing you to add custom mapping and search tools. And because it uses the same OnPoint security model relied on by major government agencies and global organizations, you can confidently manage access to resources in ways most appropriate to your needs. OnPoint 8.0 also comes with a handy utility to configure the embeddable map for your application.

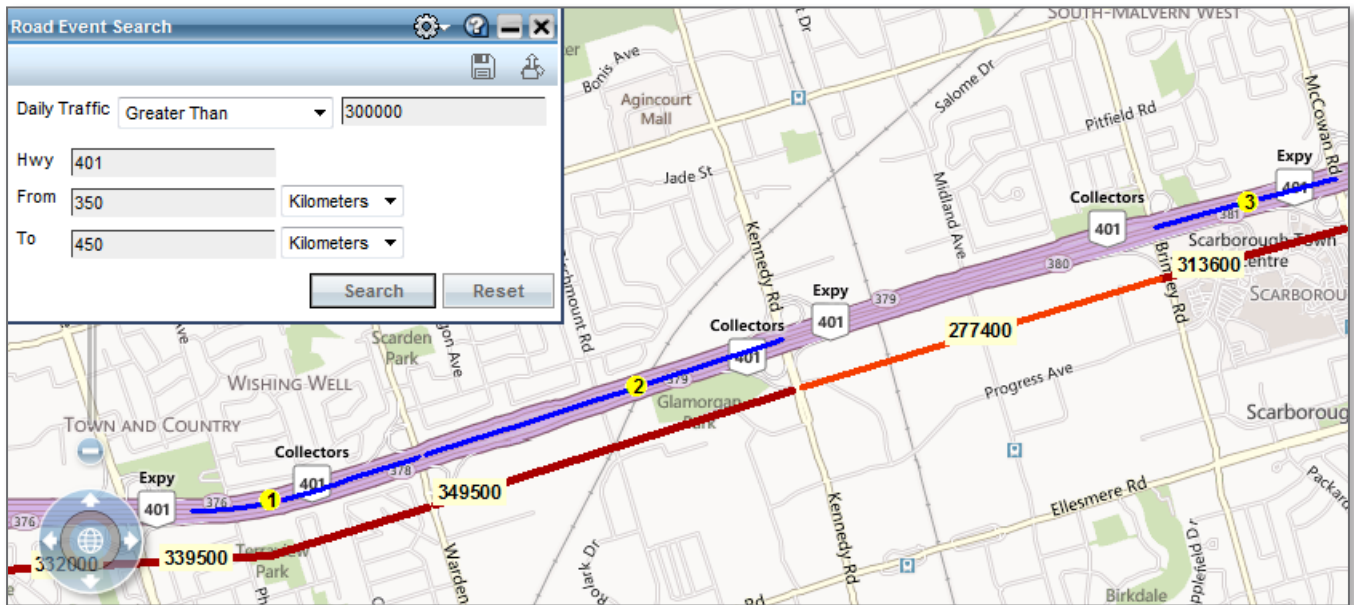
## Statistical Tool

Spatial statistics are unlike other types of statistical analyses. Consequently, traditional statistical tools are often not suitable for spatial data analysis.

For organizations that desire the ability to perform analysis on numerical attributes to achieve more in-depth information than traditional spatial analysis, the new release of OnPoint is the answer. You can calculate common statistics on a chosen result-set attribute.

## Web Print

Obtain the ability to customize output with OnPoint 8.0. A product extension of OnPoint's CartoPrint, it enables you to produce high-quality map prints based on the current map view you seen on the website. Easily create prints with cartographic quality, controlling print resolution, layout and page size.



## Linear Referencing

Linear referencing is the method of storing geographic locations by using relative positions along a measured linear feature. Distance measures are used to locate events along the line. There are many uses for linear referencing, and OnPoint 8.0 makes the process intuitive. Organizations can use their existing network datasets to perform refined spatial analysis. Users can perform searches and analysis within sections of a linear network.



## About Rolta

Rolta is a leading provider of innovative IT solutions for many vertical segments, including Federal and State Governments, Defense/HLS, Utilities, Process, Power, Financial Services, Manufacturing, Retail, and Healthcare. By uniquely combining its expertise in the IT, Engineering and Geospatial domains, Rolta develops exceptional solutions for these segments. The Company leverages its industry-specific know-how, rich repository of intellectual property that spans photogrammetry, image processing, geospatial applications, business intelligence, analytics, field-proven solution frameworks, and deep expertise in cutting-edge technologies like Geo BI, Cloud computing, Software Defined Infrastructure and Big Data for providing sophisticated enterprise-level integrated solutions. Rolta is a multinational organization headquartered in India. The Company operates from 40 locations worldwide through its subsidiaries, and has executed projects in over 45 countries. The Company benchmarks its quality processes to the world's best standards, like successful assessment for Software Application Development and Maintenance at the highest Level 5 of SEI's CMMI® version 1.3. Rolta is listed on the Bombay Stock Exchange & National Stock Exchange, and forms part of various indices on BSE/NSE in India. The Company's GDRs are listed on the Main Board of London Stock Exchange.

To learn more about the exciting new functionality available in the latest version of Rolta OnPoint, visit our website at [www.Rolta.com](http://www.Rolta.com).



ROLTA CENTER,  
5865 North Point Parkway,  
Alpharetta, GA 30022, USA.  
Tel : 800-755-8872  
[www.Rolta.com](http://www.Rolta.com)