



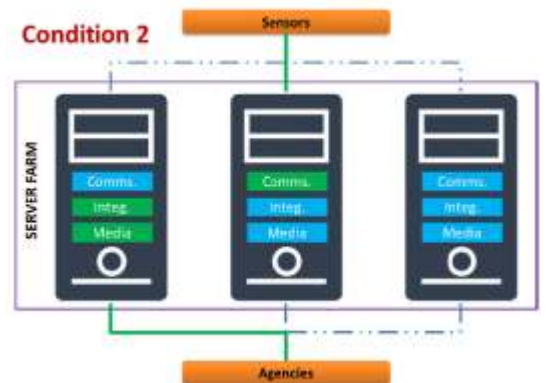
## What's new in Rolta Command & Control – Critical Infrastructure™, Release 10.0

- 1. High Availability of C2 Services:** Enables to scale with multi server deployment to meet Service Level Agreement (SLA) defined by the customer and ensures data communication with sensors and other agencies.
- 2. Web based Rolta Security Operator Console [New Module]:** Enables to connect remotely, monitors and manages incidents without any need of software at client machine. This makes Rolta Command & Control – Critical Infrastructure™ as true cloud ready.
- 3. Reports:** Provides Report with historical information about alerts and health in a presentable format to share with the management and analyze to improve the alert handling operation.

## Rolta Command & Control – Critical Infrastructure™ Release 10.0 – Detailed Description of new features:

<p><b>1. High Availability of C2 Services:</b></p>	<p>It is very essential to have system capable of avoiding single point of failure in mission critical application nature. Every Command &amp; Control Center Application be it Smart City or Border Security, data from sensors should get processed and presented without any break of communication. Rolta Command &amp; Control - Services are now enabled to support multi server deployment to cater on processing sensors and agencies communication without any interruption. This equips to meet the customer stringent Service Level Agreement (SLA) on High Availability.</p>	<p>The diagram illustrates a multi-server architecture for high availability. At the top, an orange box labeled 'Sensors' is connected to three server icons in a 'SERVER FARM'. Each server icon has three stacked modules: 'Comms' (green), 'Integ.' (blue), and 'Media' (blue). Below the servers is an orange box labeled 'Agencies'. A dashed horizontal line separates the servers into two groups. A green line connects the 'Sensors' box to the top of the first server in the left group. Another green line connects the bottom of the last server in the right group to the 'Agencies' box. The text 'Condition 1' is written in red above the dashed line, indicating a specific operational state.</p>
--	--	--

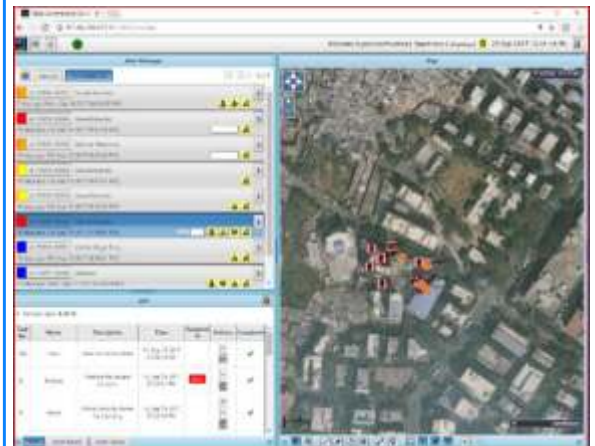
Monitoring Service which does monitoring of Rolta Command & Control - Services is also enabled with High Availability support to avoid single point of failure. It provides visualization facility in the existing Health Dashboard to give a clear indication on Services operation condition and Servers State (Active / Passive). It also provides Email & SMS notification facility to defined contacts list when there is any switching of Services between servers. Configurable health check parameters help to make it flexible to configure as per the customer needs and Infrastructure setup.



**2. Web based Rolta Security Operator Console [New Module]:**

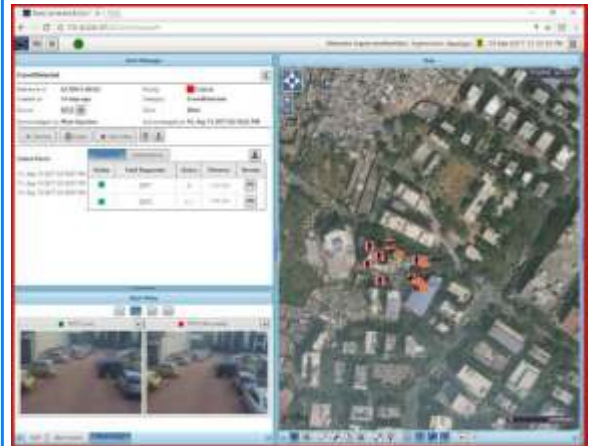
In most of the recent Smart City RFPs, customers are expecting the Web based applications to cater for remote monitoring, multiple agencies involvement and on need basis collaboration with different departments of a City.

With this release, now Rolta Command & Control – Critical Infrastructure™ is enabled with Web based Rolta Security Operator console to meet the Smart City RFP expectations.



Existing major functionalities on Rolta Security Operator (Desktop console) is developed and provided in Rolta Security Operator (Web Console). In addition, there are following enhancements in map control delivered on Web based Rolta Security Operator console,

1. Rectangle Zoom for quick Zoom functionality
2. Previous Map & Next Map View to switch between the earlier Map views
3. Geo-Fence Editing Tools (Rotate & Resize)

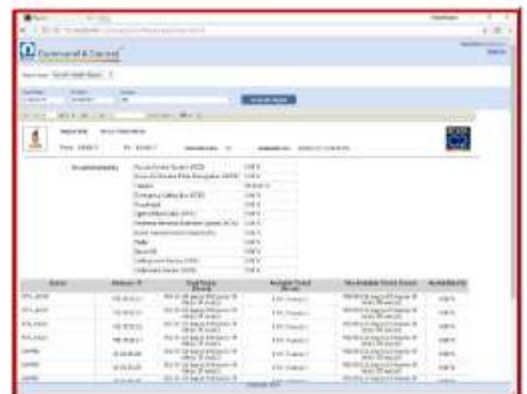
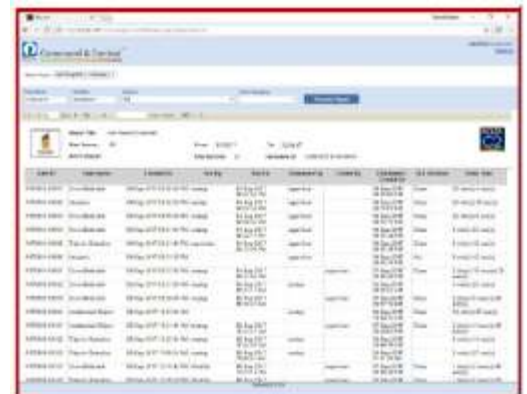


### 3. Reports:

Report is an important tool which helps to get the historical information related to alert management and health reports.

Following reports are included in this release:

1. Alert Report (By Status)
2. Alert Report (Complete)
3. Alert Report (Detail)
4. False Alarm Report
5. Sensor Health Report (Sensor Availability Report)



## Recommended System Requirements:

### Operating Systems:

- Server: Microsoft Windows Server 2012 or above
- Rolta Security Operator™ (Desktop console): Microsoft Windows 10
- Mobile Platform: Recommended on and above Android version 4.2.2

### Database:

- Couchbase Community Edition version 4.0

### Web browsers (Rolta Security Operator™, Rolta Security Administration™ & Rolta Security Mobile™):

- Google Chrome version 60 and above
- Internet Explorer version 11
- Firefox version 56 and above

## Demo availability

1. Rolta Command & Control – Critical Infrastructure™ v10.0 Demo Setup is available in Safety & Security Lab and Rcloud.
2. Demo can also be arranged on request.

## Whom to contact for more details?

For more technical details on the Product you can contact [safety.security@rolta.com](mailto:safety.security@rolta.com)