

With thousands of installations in over 130 countries, Geomatica has established itself as the software geospatial professionals around the world trust to solve problems quickly and effectively. Rolta Geomatica 2014 continues this legacy with new features that will challenge the way you think about your current image processing workflow. Rolta Geomatica 2014 adds many new tools and functions to further streamline operational workflows. Combined with improvements to key algorithms, new wizard-based functions, and an expanded list of supported sensors; Rolta Geomatica 2014 is our most ambitious release yet.

This release of Rolta Geomatica continues the trend that was started with Rolta Geomatica 2012 and continued through Rolta Geomatica 2013. Those releases placed the product at the top of the geospatial software industry for performance and flexibility. Rolta Geomatica 2014 has been designed to take advantage of all of the previous improvements as well as adding to them, thereby helping all Geomatics professionals to improve their operational efficiency.

Highlights

✓ Live DEM Editing

A new, more efficient way to produce terrain models for orthomosaics

✓ Smart Geo-fill

An advanced, geospatially intelligent copy/paste tool to rapidly improve imagery. Enhance and retouch ortho-mosaics while maintaining full geo-referencing, channel combinations and bit-depth.

✓ Python Scripting

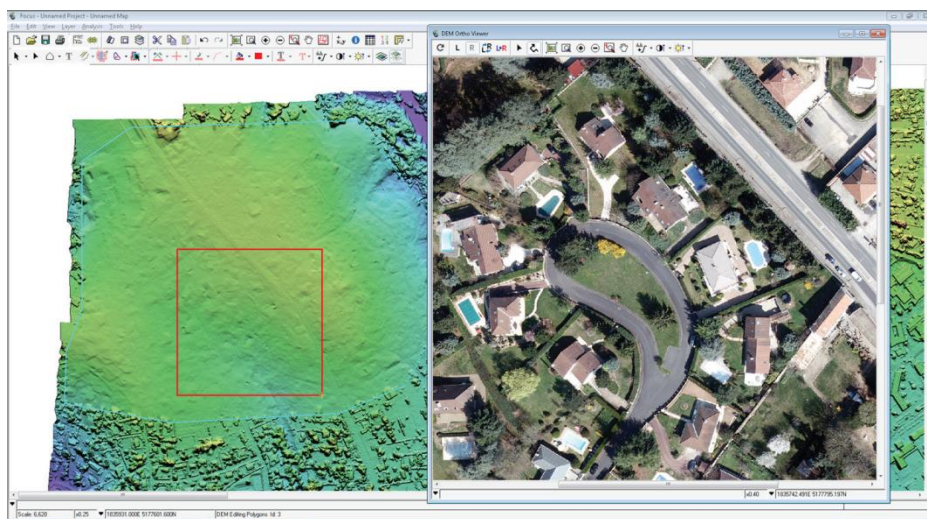
Use the powerful, free, and open-source scripting software to leverage your imagery for use in ArcGIS and other GIS applications

✓ RISAT support

RISAT radargrammetry for modeling, AutoDEM extraction and Orthophoto generation.

Live DEM Editing

A new, more efficient way to produce terrain models for orthomosaics. See and edit DTM errors in an ortho-preview that updates in real-time. You immediately see the results of your edits, so there is no need to wait for a full ortho to be produced and checked. Editing is very fast and replaces the 3D stereo requirement, and lengthy scene regeneration and rechecking found in other software. This results in a dramatic reduction in cost and much faster turnaround.

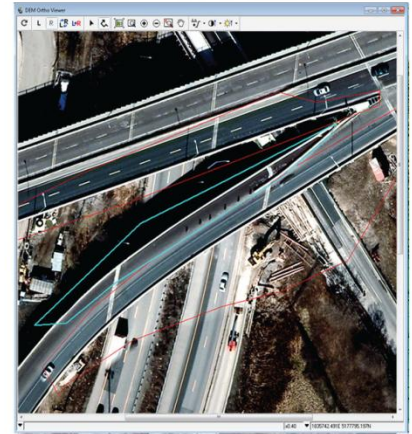
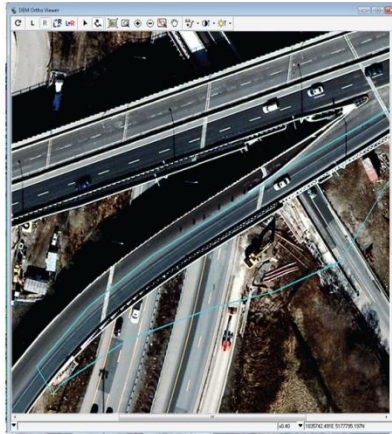


Python Scripting

Use the powerful, free, and open-source scripting software to leverage your imagery for use in ArcGIS and other GIS applications. Script your Geomatica image processing and combine it with other tasks in Python to streamline your data management applications, generate intelligent business products, or customize your output. See how to leverage your imagery for use in ArcGIS and other GIS applications

Smart Geo-fill

An advanced, geospatially intelligent copy/paste tool to rapidly improve imagery. Enhance and retouch ortho-mosaics while maintaining full geo-referencing, channel combinations and bit-depth. By using simple polygon selection in your imagery, you can select, copy and paste the best parts of the best images for your final mosaic. This new feature extends Geomatica's DEM and ortho-mosaic production, or can be used to enhance other types of overlapping images.



True Ortho

Building lean in aerial imagery can obscure important details in your imagery. With True Ortho, there is only a true, top-down view of your entire mosaic. Through the use of building models, Rolta's aerial processing software can produce True Ortho imagery – ideal for use in urban areas to eliminate building lean and feature obstruction. Automated methods are applied to the imagery pairs to determine the best possible viewing geometry and inclusion in the final mosaic.

New Change Detection

Simple, straight-forward change detection tool that can be useful in numerous circumstances in which you may want to analyze change, such as Storm damage, Forest-fire damage, Flooding and Urban sprawl.

Other Improvements

- Improved Performance, visualization in Rolta Focus has been upgraded with smoother, faster panning and zoom functionality.
- Improved DSM Extraction for large project handling, optimizations for high-resolution satellite and aerial data
- Rolta OrthoEngine now includes support for import and export of projects from/to BINGO and PatB, allowing users to more easily calculate and refine AT.
- Menu clean-up, including:
 - NEW - Options panel
 - Redesigned - Rename/Remove panel
- Rigorous Satellite Modeling
 - Improved accuracy
 - Improved performance (up to 10x faster)

Platform Support

Windows - Windows XP / Windows 7 / Windows 8, Server 2003 / Server 2008, Server 2012

Linux - Red Hat 6 / Ubuntu 10.04 / Ubuntu 12.04 / SUSE 11