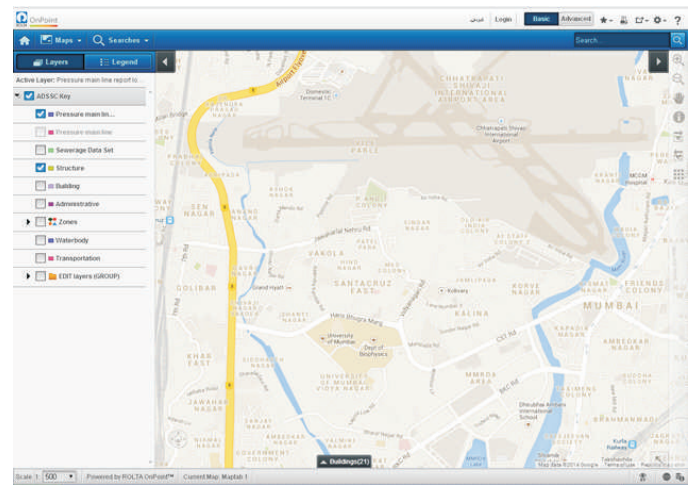


# Some compelling reasons to upgrade to Rolta OnPoint™ 8.5

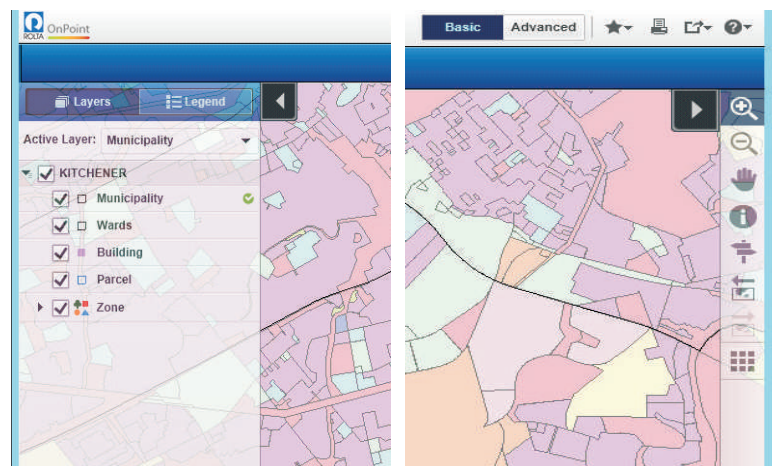
## Highlights

- ✍ Modern, uncluttered & simple user interface with ability to switch between basic and power user mode as per operational needs
- ✍ Improved system performance due to platform upgrades
- ✍ New component - CAD data export tool allows users to use maps outside the OnPoint environment
- ✍ New component - Geoportal integration for map catalogue allowing easy search and discovery of existing geospatial data
- ✍ Upgrade of LRS with event editing
- ✍ Advanced attribute editing supporting snapping

OnPoint 8.5 release date: December 2014



Web User Interface



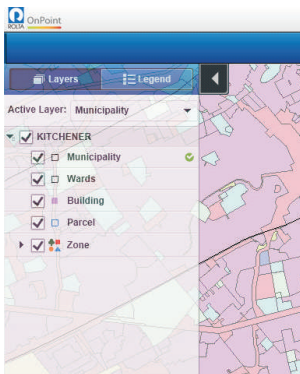
Transparent & translucent panels

# Some compelling reasons to upgrade to OnPoint 8.5

## Modern, uncluttered & simple user interface

### Improved user experience using HTML5 & CSS 3.0

- ✖ Modern, uncluttered & simple user interface
- ✖ Transparent & translucent panels on hover for easy visibility of maps at all times
- ✖ Collapsible panels for adjusting map area on the website
- ✖ Floating map controls for ease of access



### Regrouping and re-layout of tools for enhanced user experience

- ✖ Basic and advance modes provide segregation of tools among user groups
- ✖ Customizable result panel with full, split and minimized view
- ✖ Redefined side panels, status bar, searches and map tabs for ease of use

## Support for new platforms and services

### Support for Internet Explorer 11, Chrome 37 & Firefox 31 and above

- ✖ Improved page loading times and faster performance goes well with the new enhanced UI which improves the map browsing experience for users with new browsers
- ✖ Upgrading to IE 11 enables OnPoint to provide support to touch based platforms for future releases

### MS Windows Server 2012 R2 and Windows 8.1 certification

- ✖ New and improved features of MS Windows OS improves OnPoint performance with better networking experience and storage

### ESRI ArcGIS Server 10.2.2 certification

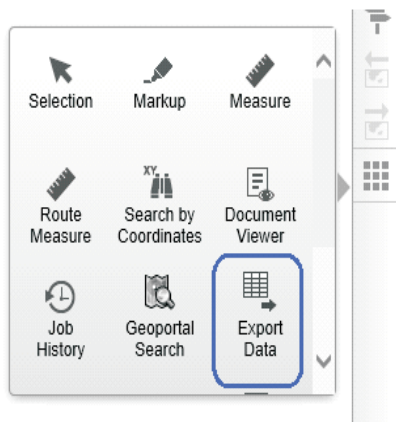
- ✖ Rolta OnPoint now supports ArcGIS server 10.2.2

### Oracle 12c certification

- ✖ Rolta OnPoint now supports Oracle 12c

# New capabilities in OnPoint 8.5

## New CAD data export tool



- ✗ Export map data into SHP, DWG and DGN format with user selectable extent
- ✗ Upload CAD data into website and extract features to GIS format on the website

Export Data

Export map with 3 easy steps

Select Spatial Extent:

☒ All features in current extent

☐ Rectangular extent of selected feature

☐ Draw polygon

☐ Map tile

< Back Cancel Next >

Export Data

Export map with 3 easy steps

Enter Base File Name:

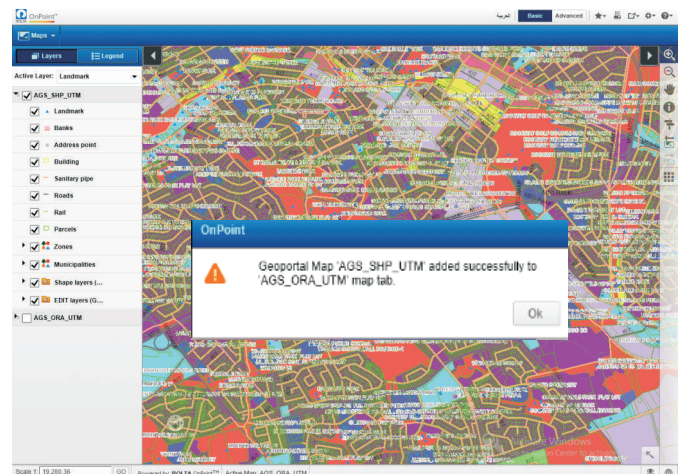
test

*File name must not have special characters such as @ # { } ? / etc.*

< Back Cancel Export

## Geoportal integration for map catalogue

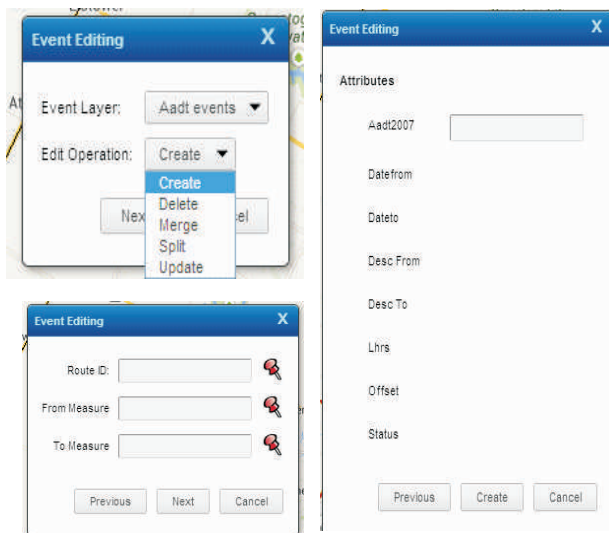
- ✗ Geoportal integration enables OnPoint in data cataloging for published maps
- ✗ Consume searched maps from Geoportal into OnPoint
- ✗ The integration enables OnPoint for easy search and discovery of existing geospatial data and add it to OnPoint website
- ✗ Provides an interactive interface within the OnPoint website to search and add maps



## New capabilities in OnPoint 8.5

### Upgrade of LRS with event editing

Rolta OnPoint allows event editing, which enables you to manage events and perform functions like create, retire, split and merge editable features on the OnPoint website.



### Advanced attribute editing supporting snapping

The OnPoint user is able to perform snapping along with web editing. The user can also perform attribute editing based on spatial lookup on the newly added features in OnPoint.

