



Rolta OneView™

Enterprise Intelligence Suite



Rolta OneView™ Self-Service—an easy, efficient way to assess how OneView™ can help you achieve operational excellence for your business at no cost to you

Private cloud service, just for you

Introducing Rolta OneView™

Rolta OneView™ is a web-based Business Intelligence solution that enables personnel, at all levels of the organization, to make accurate and on-time decisions. Rolta OneView™ provides a platform to improve performance and overall operational effectiveness of the organization by aligning the work process of the personnel with the goals of the business.

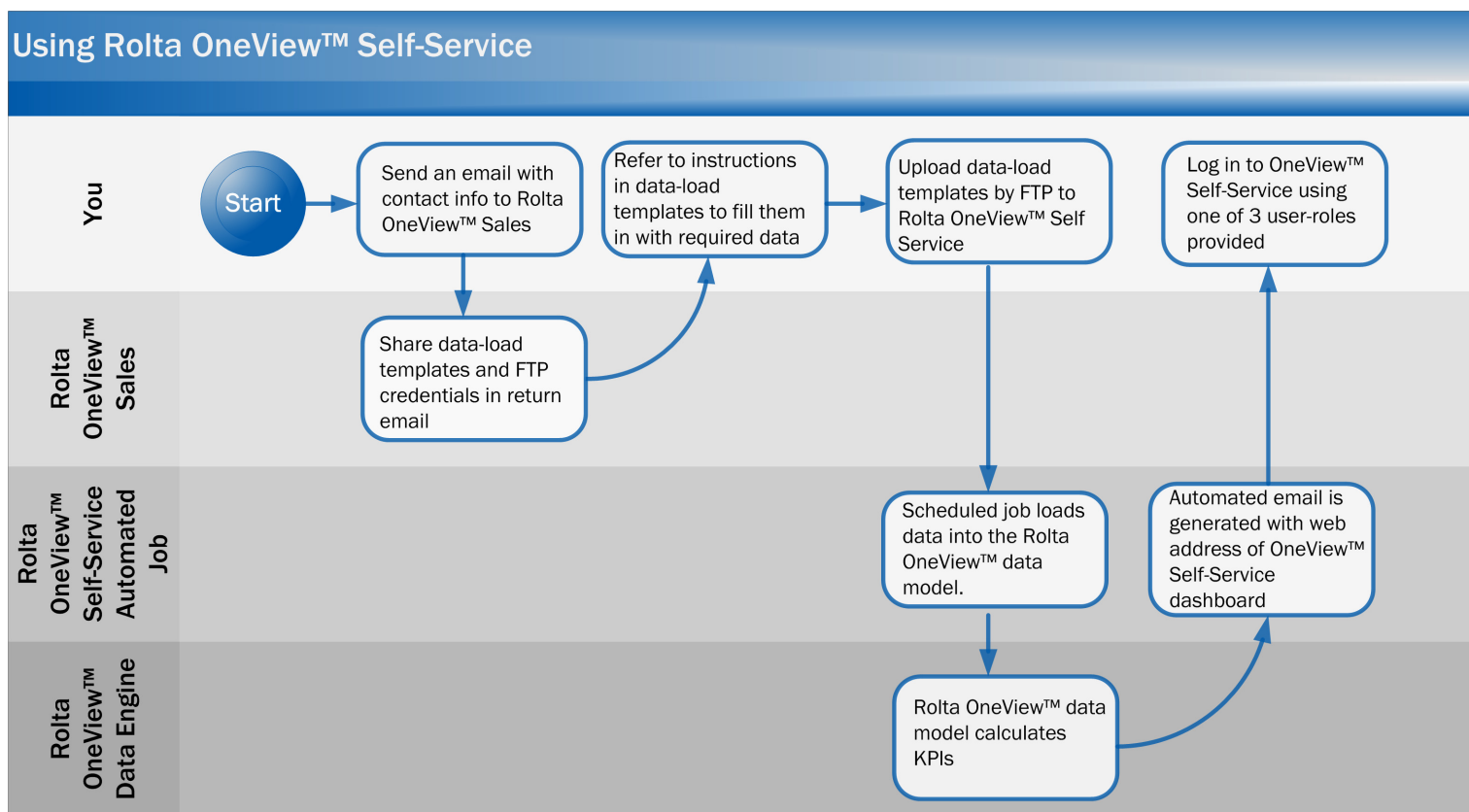
The innovative solution breaks down barriers to operational and business excellence, such as data silos across the enterprise, thereby providing a 360° view of operations. Rolta OneView's logical architecture, derived with the "Integrate-Analyze-Deliver" theme, has been built using best-of-breed BI platforms as well as significant intellectual property from Rolta. Rolta OneView™ has more than 1300 unique performance measures and close to 3000 performance measures in total.

Verticals	Count of Performance Measures	For Executives	For Heads of Departments	For Operations
Refineries	230	53	222	221
Chemicals	575	104	575	392
Asset Insights	41	7	41	25
Business Insights	130	24	130	61
HSE Insights	116	10	116	106
Maintenance & Reliability Insights	77	8	77	24
Operations Insights	37	12	37	20
Project insights	44	9	44	44
Supply Chain Insights	69	8	69	56
Sustainability Insights	61	26	61	56
Petrochemicals	578	105	577	396
Power Generation	389	29	389	389
Utilities - Electricity	436	59	436	436
Utilities - Water	426	69	426	426
Oil & Gas Upstream	321	27	68	312
Grand Total	2955	446	2693	2572

Rolta OneView™ Self-Service *a subset of OneView™ for your evaluation*

Rolta OneView™ Self-Service—just a small subset of the power of Rolta OneView™—comes with 15 predefined KPIs that are widely used for analytics across the chemical industry. Rest assured that this package is easy to use and turnaround time is fast because no configuration is required—Rolta OneView™ Self-Service resides in the Rolta Private Cloud. All you need is a computer with Microsoft Office, Internet access and Internet Explorer 8 or later. Use this package to load your data and gain insights into the business. Specific instructions to achieve this are provided by Rolta.

Process flow



Role-based access to 15 KPIs in 4 modules

Based on the role assigned to them, users will be able to view reports/KPIs authorized for them. The evaluation package has three types of users defined, one for each role:

Plant Manager

- Has access to all the data and KPIs.

Area Superintendent

- Has access to all the data from the area and its related KPIs.

Unit Engineer

- Has access to all the data for the site and its related KPIs.

Operations KPIs

Production

- The actual declared production (on-spec) from the unit for the specified period.

Capacity Utilization

- Actual utilization of plant with respect to the design capacity (name plate capacity) for a specific period.

Plant Availability

- The number of days a plant is available for production out of the total days in a specific period, excluding the planned outage time.

Specific Energy Consumption

- Determines the energy requirement for the plant.

Operation Budget vs. Actual

- The variance percentage of actual cost against budget for the Operation department.

Maintenance KPIs

PM Compliance

- The percentage of preventive maintenance (PM) work orders completed on time compared to the number of preventive maintenance work orders released and pending during the specific period.

Backlog of Work orders

- The percentage of backlog work orders by due date compared to the number of work orders released and pending during the specific period.

Planning Effectiveness

- The percentage of work orders released compared to the number of notifications created in a specific period.

Maintenance Budget Compliance

- The variance percentage of actual cost against budget for Maintenance department.

No of Breakdowns

- The number of notifications raised with the Breakdown flag.

PM to CM Ratio

- The ratio of preventative maintenance orders to corrective maintenance orders.

Role-based actionable insights

Reliability KPIs

MTBF

- *Mean Time Between Failures* is the average days of running time between equipment failures.

MTTR

- *Mean Time to Repair* is the average time required to repair equipment failures. Expressed mathematically, it is the total corrective maintenance time divided by the total number of corrective maintenance actions during a given period of time.

Inspection Compliance Variance

- The percentage of non-executed planned inspection jobs compared to total planned jobs.

HSE KPI

No. of Incidents – Number of LTI incidents

- The count of fatality and LTI (Lost time incidents) incidents. Normally person hours are lost during these types of incidents.

Business benefits of Rolta OneView™

Higher and faster ROI

- Substantial prebuilt analytics across several key functions, increased ROI within a few months and time-to-value in weeks due to rapid adoption.

Lower total cost of ownership

- Best-of-breed BI platforms from Oracle and SAP for easy extensibility, customization, reuse of existing services using SOA, high scalability and easy upgradability.

Rapid deployment

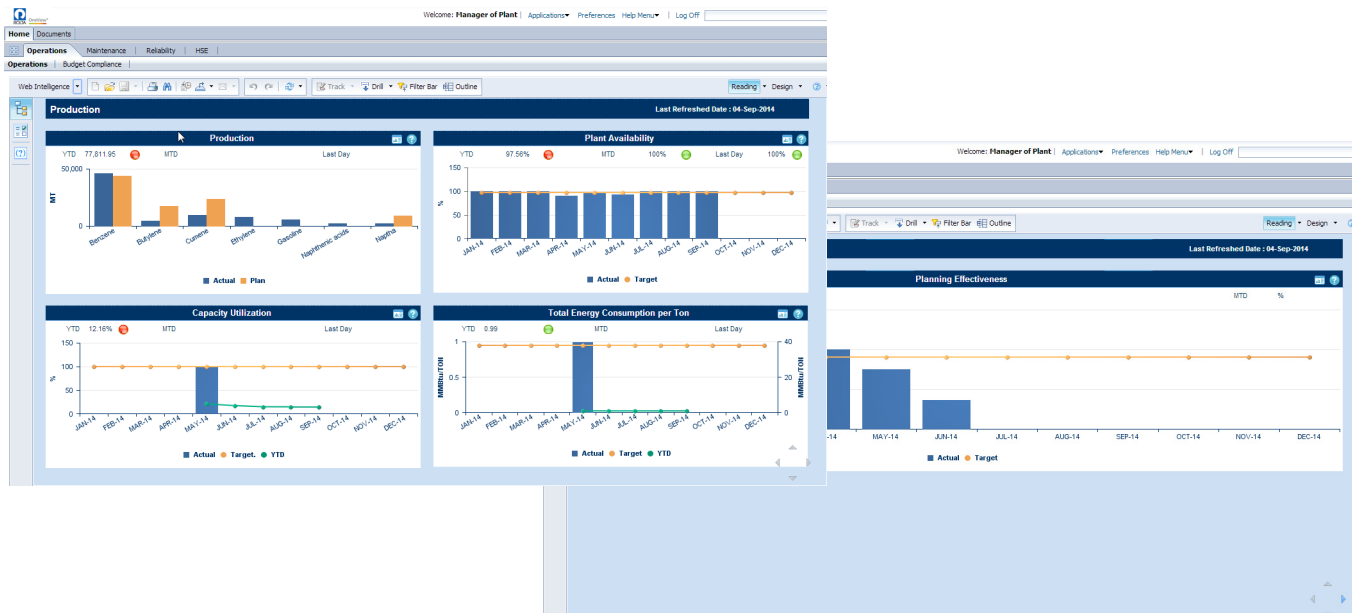
- More than 60 prebuilt connectors for operational and business systems, prebuilt work processes, standards-based pluggable architecture and rapid report customization through a rich metadata model.

Feature-rich and complete

- Extensive functional coverage across varied industries, deeper cross-functional and integrated insights into operational and business systems, extensible data and DIMS, secure data access and Cloud/Mobile/Big Data readiness.

Where to go from here

1. Send your contact details to Rolta OneView™ sales at nasales@rolta.com.
2. Rolta will provide you with a data-load template and credentials for an FTP site by email. The data -load template has specific instructions to upload your data.
3. Place the data in the template by following the instructions given in the template.
4. After you have entered your data into the template, save the data-load template at the given FTP location.
5. The OneView™ Self-Service package will trigger and load the data from the template into the data warehouse and eventually in the reports and KPIs.
6. After you have successfully uploaded your data, you will receive an email notification from the Rolta Private Cloud. The email will contain the web address together with a user name and password, which you can use to access the OneView™ Self-Service evaluation package.
7. Log in to Rolta OneView™ Self-Service to view the KPIs populated with your data.



Rolta is a leading provider of consulting, managed services and technology for many vertical segments, including asset-intensive industries, such as Upstream, Midstream and Downstream Oil & Gas, Power Generation, Petrochemicals and Chemicals. Enterprise-level solutions are built around Rolta's intellectual property and domain expertise to offer deep insights and understanding of industry drivers and supporting business processes that help organizations achieve their business goals. Through our innovative approach, Rolta makes a lasting impact on your business.

ROLTA CENTER,
5865 North Point Parkway, Alpharetta, GA 30022, USA.
Tel: 800-755-8872
www.Rolta.com
©2014 Rolta International. All rights reserved.