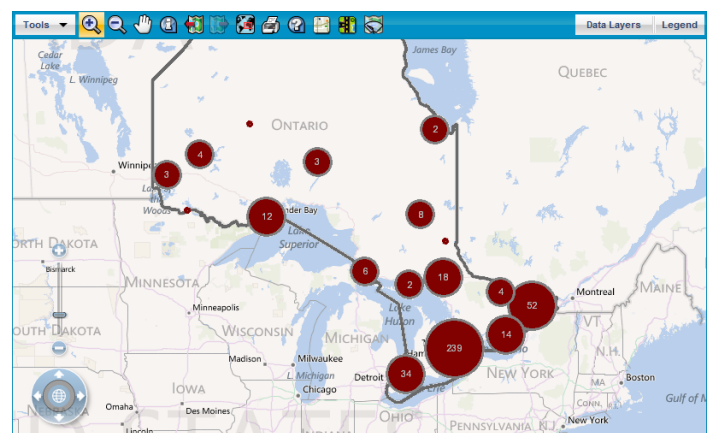


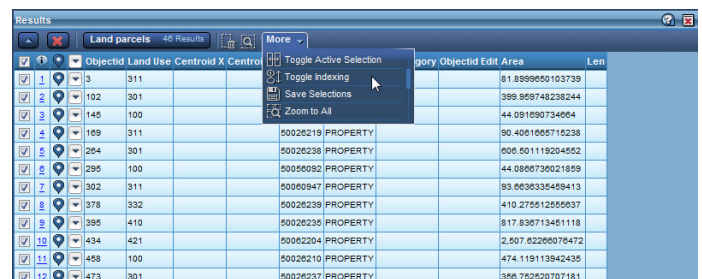
## Some compelling reasons to upgrade to OnPoint 7.5

### Highlights

- Dynamically group points in close proximity into clusters
- OnPoint system health check
- Redesigned results display
- Transparency on multiple map services
- Multiple base maps
- ArcGIS Server routing supported
- CAPTCHA verification of users' login credentials
- Password strength and expiration policies
- Renaming themes, making them secure resources
- Enhanced ArcGIS Server 10.1 support



Clusters representing nos of companies in a business sector



Objectid	Land Use	Centroid X	Centroid Y	Category	Objectid	Edit Area	Len
1	3	311					81.8999950103739
2	102	301					399.959748238244
3	145	100					44.091090734064
4	109	311					90.4061065715238
5	264	301					606.501119204552
6	295	100					44.080736021859
7	302	311					93.0636335459413
8	378	332					410.279512556537
9	395	410					817.836713451118
10	434	421					2.507.6226076472
11	458	100					474.119113842435
12	473	301					356.752520707181

Enhanced Results window

OnPoint 7.5 release date: October 2012

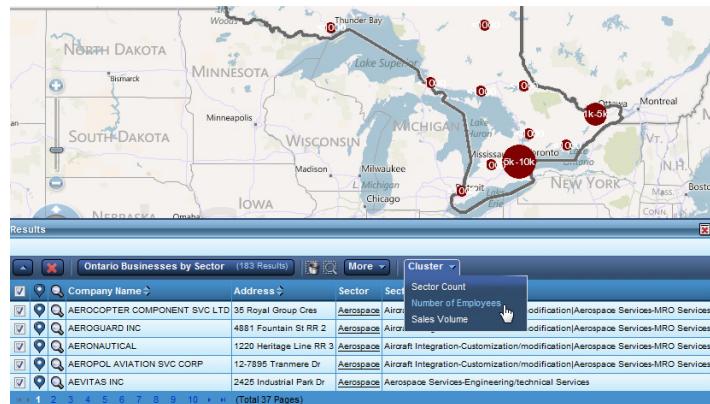
## New capabilities in OnPoint 7.5

### Dynamically group points in close proximity into clusters

Clusters are point features that are displayed using a marker symbol, representing a group of points created dynamically according to various criteria administrators specify in point layers. Displaying points that overlap or that occur close to each other as single groups called clusters can help users analyze their data.

In OnPoint, clusters can be created dynamically according to the number of points in a specified proximity in a point layer. Clusters can be labeled by count (number of points a cluster represents) or by sum (sum of the values of a numeric field in the point layer).

For example, the sum of total sales of a group of store locations could be used as a cluster label. Clusters allow users to view concentration patterns of point features on a map, which one may not necessarily be able to discern by looking at data in tabular form.



Clusters representing no of employees per group



Clusters representing sales volume of groups of companies

## OnPoint system health check

Administrators can configure a system health check in the Postinstaller. They can set up the interval at which the check is run automatically and can specify multiple addresses of administrators or users who need to be notified by email if problems occur. The health check monitors for loss of connectivity between OnPoint and its data sources, such as map services, databases, base maps, WMS and WFS services. In addition, data source stoppages are also reported.

## Redesigned results display

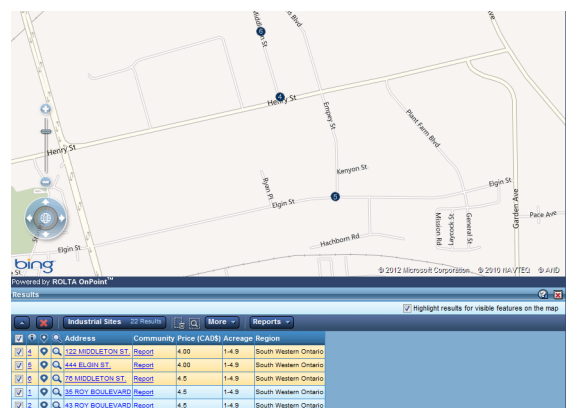
The Results window has been redesigned with a view to making it more attractive and easier to use. Users can access more OnPoint functionality in an intuitive way directly from attribute data entries returned in the Results window when users perform a selection or search on the map:

- Zoom to a feature from its attribute data entry
- Remove a data entry from the list of results and its related feature from the map



Accessing more commands

Users can highlight the attribute data entries in the Results window related to the visible features on the map:



Highlighting results for visible features on the map

## Transparency on multiple map services

Users can adjust transparency of multiple map services on the InSwing presentation theme.

## Multiple base maps

Administrators can add multiple base maps to OnPoint web-GIS applications. Users select the base map view they want to display from a drop-down list. One base map can display at a time.

## ArcGIS Server routing supported

ArcGIS Server has been added as a routing provider. ArcGIS Server with the Network Analyst extension is required.

## CAPTCHA verification of users' login credentials

Administrators can enable CAPTCHA verification of users' login credentials. Users are prompted with an automatically generated alphanumeric string that is contorted so that it is only human readable. They must enter the correct alphanumeric string to be able to log on for the first time after creating a user account.

## Password strength and expiration policies

Administrators can configure required strength and can set expiration times on passwords.

## Renaming themes, making them secure resources

Administrators can rename presentation themes and classify them as secure resources in the OnPoint Security Console. A theme can thus be assigned to user roles, making it only accessible to users assigned a specific role.

## Enhanced ArcGIS Server 10.1 support

More OnPoint functionality is now supported in ArcGIS optimized map services (.MSDs) added to OnPoint using an ArcGIS Server (SOAP API) connection:

- Thematic mapping
- CartoPrint



## Product management

Send an e-mail message to OnPoint Product Management at [onpoint.pm@rolta.com](mailto:onpoint.pm@rolta.com) or call +1.905.754.8159.

## Account management

Send an e-mail message to OnPoint Account Management at [onpoint.sales@rolta.com](mailto:onpoint.sales@rolta.com) or call +1 905.754.8100.

## Support services

Send an e-mail message to [onpoint.support@rolta.com](mailto:onpoint.support@rolta.com).

Copyright © 2012 ROLTA International. All rights reserved.

ROLTA INTERNATIONAL, INC.  
5865 North Point Parkway  
Alpharetta, GA 30022  
+1 678.942.5000  
<http://www.rolta.com/geospatial-fusion.html>



OnPoint™